



**DEVELOPMENT OF INTELLIGENT
TECHNOLOGIES FOR ENVIRONMENT AND
INFRASTRUCTURE IN AFRICA AS WELL AS
DEVELOPMENT OF CIVIL INFRASTRUCTURE
PROJECTS**

Made in Germany



Intelligente Technologien für Afrika

IN A NUTSHELL

- ITA – Intelligent Technologies for Africa is a German network of small and medium sized companies.
- Target: promotion of independent water and energy supply systems in developing and emerging countries with a special focus on Africa



OVERALL QUICK FACTS



TOTAL STAFF
1.864



TOTAL TURNOVER
> EUR 300 million



FOUNDING YEARS
1949-2016



LOCATIONS
100% Germany (HQs)

INTRODUCTION

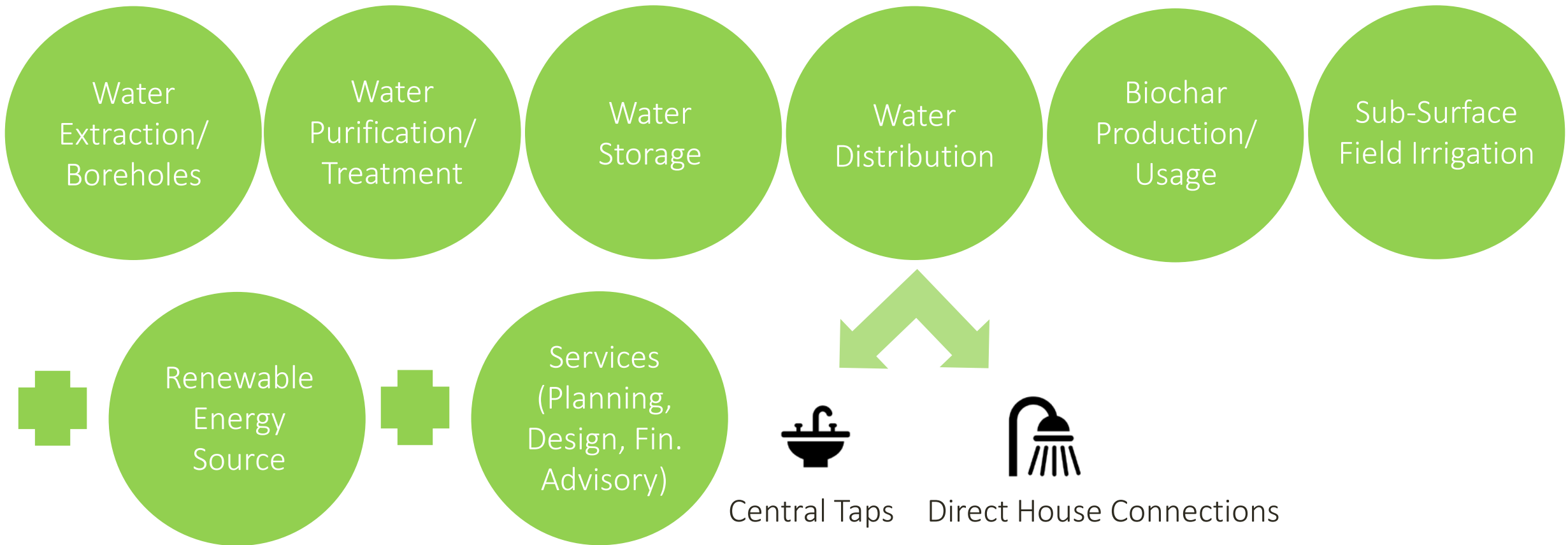
- ITA is a German network of SME companies, funded by the Federal Ministry of Economics within the field of water infrastructure.
- The network focuses on the development, creation and marketing of modular system solutions for intelligent, stand-alone water and energy supply.
- The networks' portfolio includes the resource efficient and energy efficient supply, use and recovery of water, in addition to stand-alone energy supply.



MODULAR INFRASTRUCTURE SYSTEMS FOR STAND-ALONE WATER AND ENERGY SUPPLY

COMPONENTS

ENERGY-EFFICIENT WATER SUPPLY ALL ALONG THE CHAIN (INCLUDING DESIGN, PLANNING, LAYOUT)



QUICK FACTS



STAFF
38



TURNOVER
EUR 4,2 million



FOUNDING YEAR
1962



LOCATIONS
Lohmar, Roßtal,
Montzen (BEL)



BIESKE UND PARTNER

Beratende Ingenieure GmbH



REFERENCES

- Integrated water resource management system, Namibia (Cuvelai-Delta), institut water supply and ground water technology
- Redesign and well construction pilot, 1.000 cbm/h, BEW GmbH, Bocholt
- Numerous ground water development and und well construction projects of all sizes

PRODUCTS & SERVICES

- Sci-tech consulting and planning of fountains and spring sockets
- Sci-tech consulting and planning of water protection areas, water right application
- Public and industrial water supply
- R&D activities for the development of practice-oriented solutions and technical studies

QUICK FACTS



STAFF
220



LOCATIONS

Koblenz, Augsburg, Bonn,
Darmstadt, Dortmund, Köln,
Leipzig, Leonberg, München,
Speyer, Erfurt
(GER)



FOUNDING YEAR
1960

REFERENCES

- Flood protection in Koblenz: Engineering of pumping station
- Engineering and planning of various dams
- Ecological hydraulic engineering on Wertach-river



PRODUCTS & SERVICES

- Technical-economical solutions for hydraulic engineering, hydropower, water industry, and household water management

ENVI-SYSTEMS GMBH

QUICK FACTS



STAFF
12



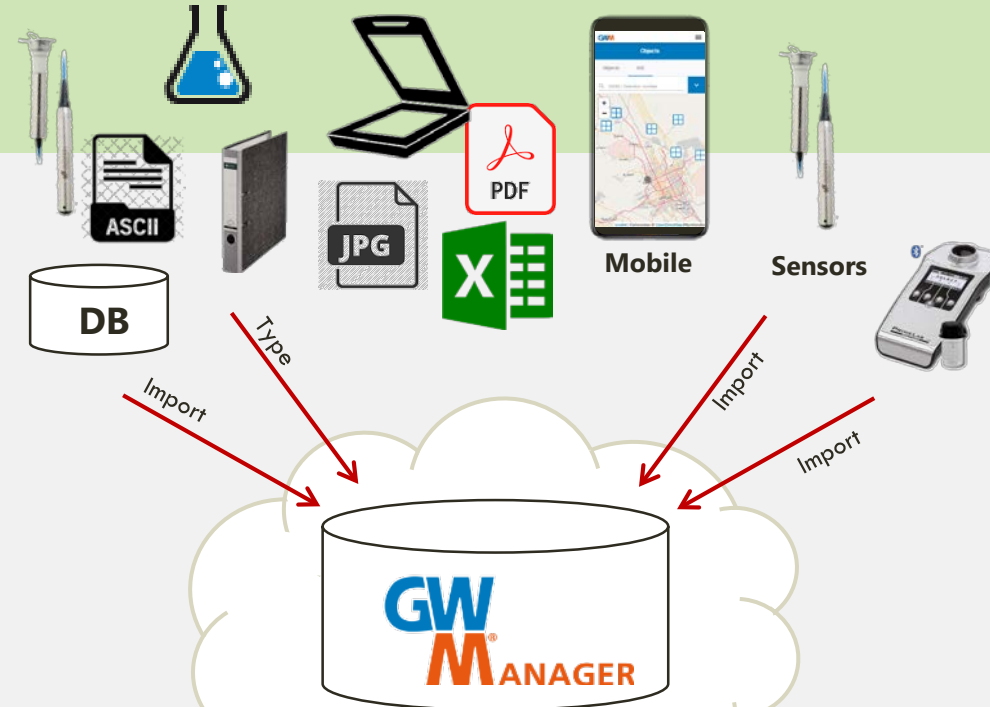
LOCATION
Darmstadt (GER)



FOUNDING YEAR
2006

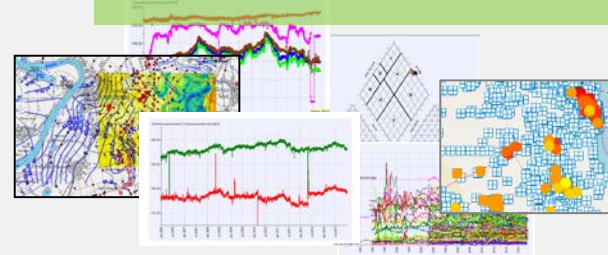
REFERENCES

- 25 Legal Authorities (environmental, health dep.)
- 15 Legal Authorities (drink/ground/waste water, forestal dep.)
- 120 Water Supply Companies (e.g. Hessenwasser, ZVG, ZWO)
- 20 Engineering Societies (e.g. BGS, Björnsen, BuP)
- 30 Laboratories (e.g. Agrolab, Eurofins, Fresenius)
- 10 Industrial Companies (e.g. BASF, ROCHE, German Rail)



PRODUCTS & SERVICES

- Holistic data-management
- Providing a cloud-based database
- Web-, App- and sensor-services
- Integration of internal and external partners



Evaluations



Intelligente Technologien für Afrika

EXFICON GMBH

QUICK FACTS



STAFF
9



EXPORT QUOTA
45%



FOUNDING YEAR
2011



LOCATION
Frankfurt am Main (GER)



TURNOVER
EUR 450 000

REFERENCES

- Vehicle-leasing pool as project finance in Western Africa (EUR 100 million): establishment of special-purpose-vehicle, arrangement of governmental guarantee, development of financial model covering 24 separate deliveries
- Combined cycle power plant in Central Europe (USD 270 million): Preparation of information memorandum, discussion with potential financing partners



Intelligente Technologien für Afrika

exficon

export finance consulting
tender agency desk

PRODUCTS & SERVICES

- Structuring and arranging of project and export financings
- Development of complex financial models
- (ECA- / PRI-) covered buyer and supplier credits
- Preparation of bankable financing proposals until financial close



FRANK GMBH

QUICK FACTS



STAFF (GROUP)
600



EXPORT QUOTA
15%



FOUNDING YEAR
1965



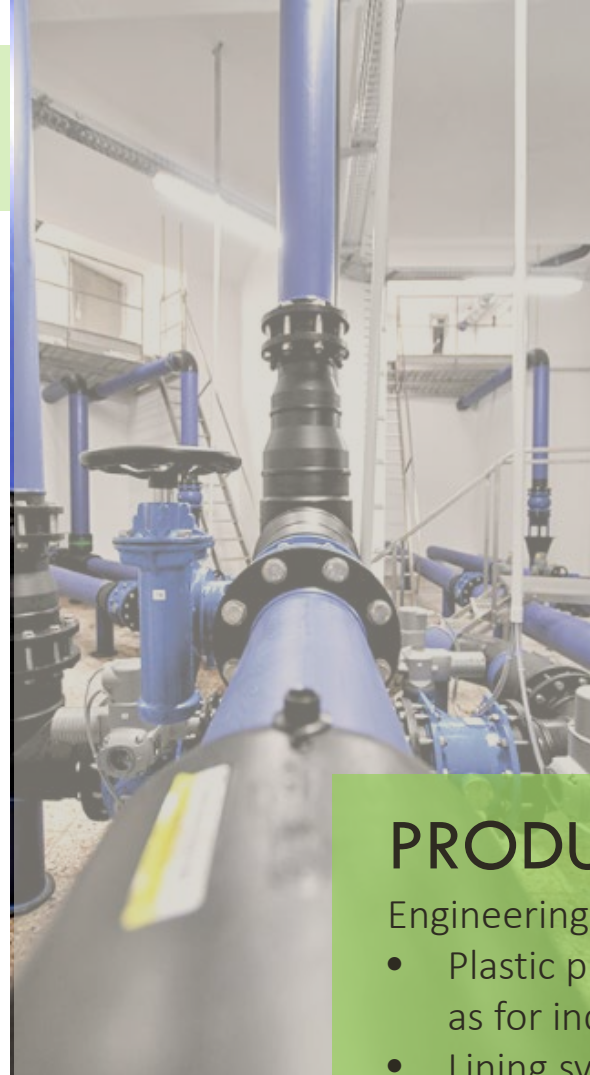
LOCATION
Mörfelden-Walldorf (GER)



TURNOVER (GROUP)
EUR 150 million

REFERENCES

- Elbtal: Installation of Germany's largest polyethylene drinking water tank (3 tubes, DN 3000, volume: 800m³)
- Steige: Rehabilitation of world's largest drinking water tank with 6,000 m³ volume
- Alb-Donau-area: Rehabilitation of main drinking water pipeline
- Munich: Rehabilitation of a DN 1600 drinking water pipeline using folding method (world premier)



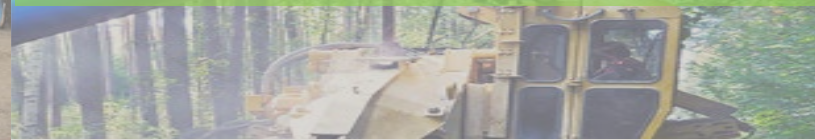
Intelligente Technologien für Afrika



PRODUCTS & SERVICES

Engineering | Production | Sales of:

- Plastic pipe systems for gas- and water supply and sewage as well as for industrial clients
- Lining systems for the rehabilitation and the construction of drinking water storage
- Plastic fittings, semi-finished goods, geothermal systems for close-to-surface geothermal energy
- Welding and joining technology



TINNIT TECHNOLOGIES GMBH

QUICK FACTS



STAFF
5



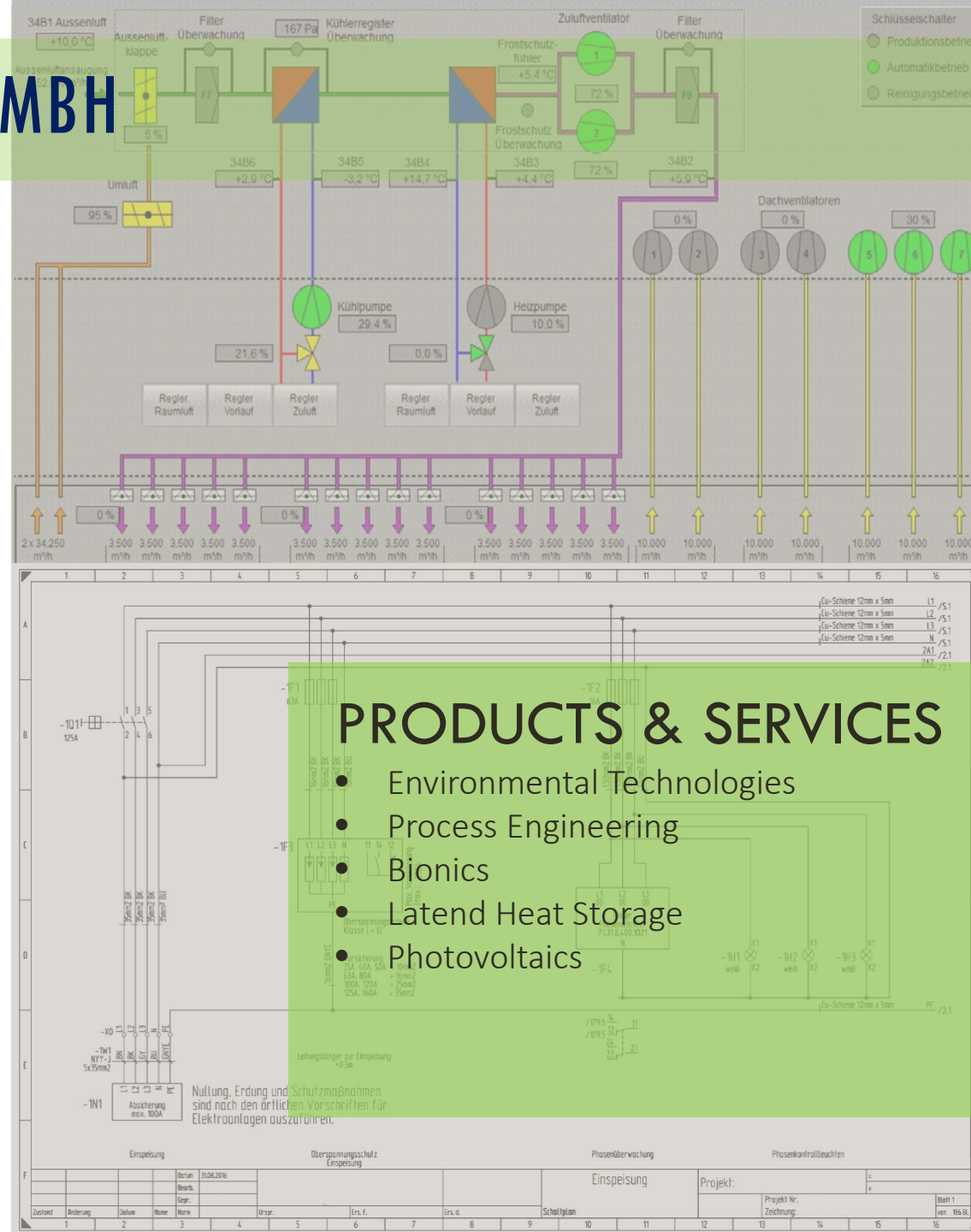
LOCATION
Karlsruhe (GER)



FOUNDING YEAR
2001

REFERENCES

- Polar Bear pavilion at ITV in Stuttgart-Denkendorf
- Spacer fabrics for water harvesting



Intelligente Technologien für Afrika



PRODUCTS & SERVICES

- Environmental Technologies
- Process Engineering
- Bionics
- Latent Heat Storage
- Photovoltaics

GRÜNBECK WASSERAUFBEREITUNG GMBH



Intelligente Technologien für Afrika

QUICK FACTS



STAFF
850



EXPORT QUOTA
18%



FOUNDING YEAR
1949



LOCATION
Höchstädt a. d. Donau
(GER)



TURNOVER
EUR 140 million



grünbeck

REFERENCES

- Water treatment and chlorination technology for swimming pools all over Europe
- Water treatment containers for independent water supply in Central and South America as well as Asia
- Equipped numerous hotels and hospitals worldwide (more than 80 completed projects)

PRODUCTS & SERVICES

- Systems for filtering, desalination, and decalcification of water
- Water treatment systems for households, business, and industrial scale; amongst others: building technology, swimming pool technology, health care, medical products, beverage and food industry, power houses, water supply, hotels, wellness, amusement parks, laundry facilities



SWIPTEC ENGINEERING GMBH



Intelligente Technologien für Afrika

QUICK FACTS



STAFF
9



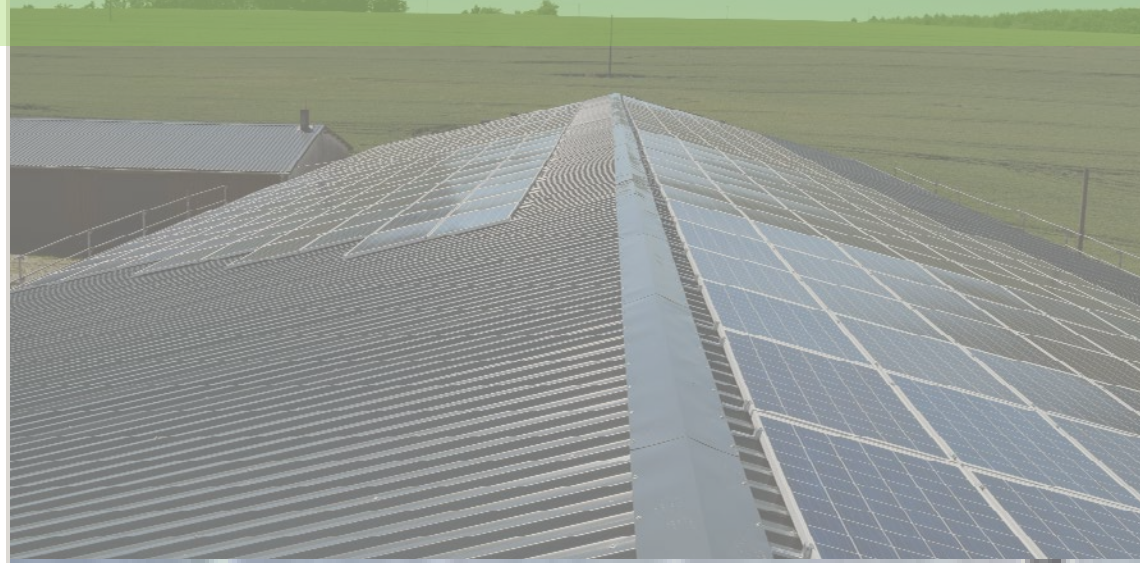
LOCATION
Elz (GER)



FOUNDING YEAR
2016

REFERENCES

- 100 kWp Hadamar/Hessen/Deutschland
- 232 kWp Weilburg/Hessen/Deutschland



swiptec[®]
ENGINEERING

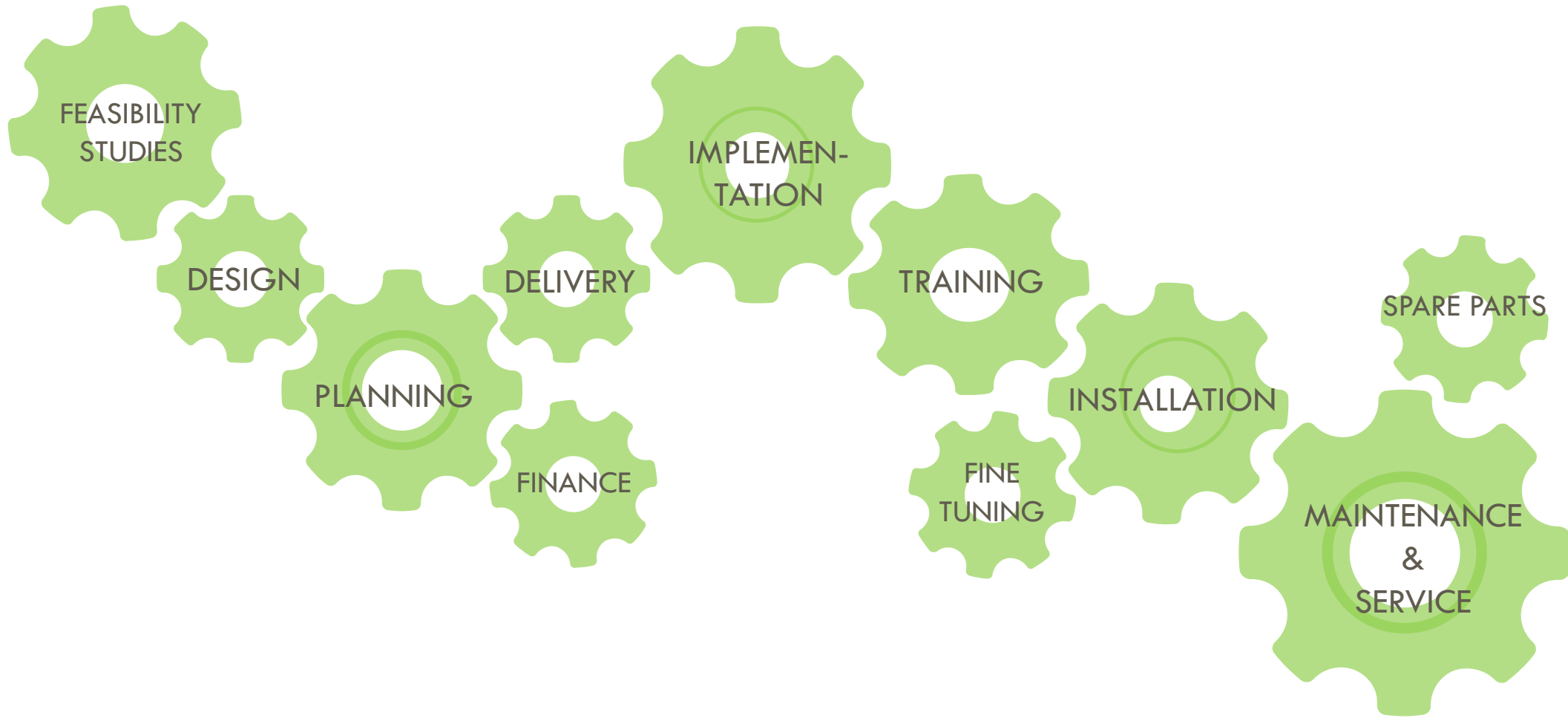
PRODUCTS & SERVICES

- Photovoltaic
- Open space systems/Roof-top systems
- Energy-storage systems
- Customized energy generation and storage
- Turnkey (consultation, planning, sales, assembly, commissioning, after sales and maintenance)
- Energy efficiency (consumption and cost analysis with conception)

SUMMARY: SCOPE OF SERVICES



Intelligente Technologien für Afrika



FEASIBILITY
STUDIES

DESIGN

PLANNING

DELIVERY

FINANCE

IMPLEMEN-
TATION

TRAINING

FINE
TUNING

INSTALLATION

SPARE PARTS

MAINTENANCE
&
SERVICE

Thank you for your attention!

CONTACT

Steinbeis Innovation & Management GmbH
Claudius Willmann
Ludwig-Wilhelm-Str. 22
76530 Baden-Baden

tel.: +49 7221 33726

email: cw@steinbeis-innovations.de
web: www.steinbeis-innovations.de